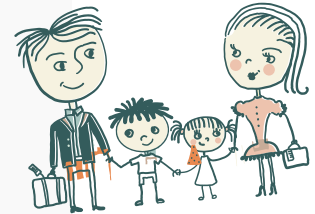
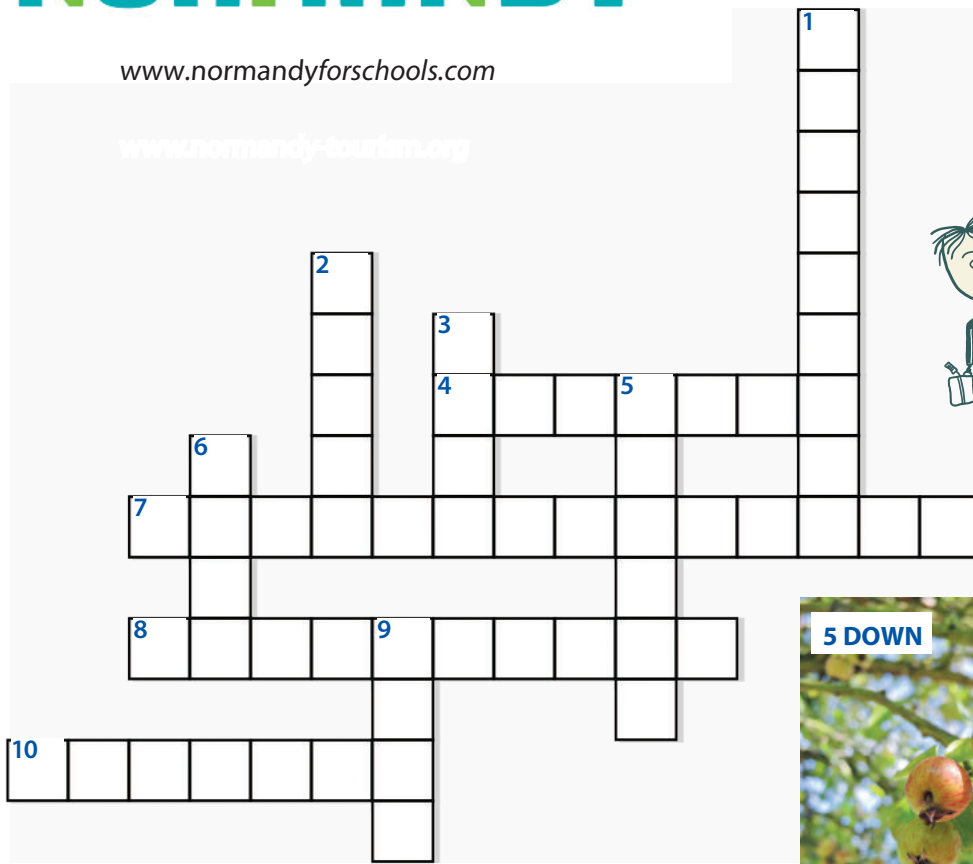


NORMANDY

www.normandyforschools.com

www.normandy-tourism.org



DOWN

- 1** The name of a Normandy village and the well-known cheese that originates there. (noun, 9)
- 2** The river that flows through Rouen. (noun, 5)
- 3** A plant, also known as linseed, that grows in Seine-Maritime. The stems are traditionally used for making rope and cloth. (noun, 4)
- 5** The fruit that cider is made from. (noun, 6)
- 6** A fine fabric made by looping, knitting or twisting threads in patterns. Alençon is famous for this craft. (noun, 4)
- 9** An historic city where two important abbeys built by William the Conqueror can be found. It is also the site of major battle in the Second World War. (noun, 4)

ACROSS

- 4** A major port in France. Its name means 'the harbour' or 'the port'. (noun, 7)
- 7** The 70m long embroidery made in the 11th Century to tell the story of the conquest of England by William, Duke of Normandy. This beautiful historical document can be seen in a museum in a Normandy town with the same name. (noun, 6, 8)
- 8** A heart-shaped cheese made in Normandy, thought to be one of France's oldest cheeses. (noun, 10)
- 10** In 1028, William the Conqueror was born in this town. (noun, 7)

